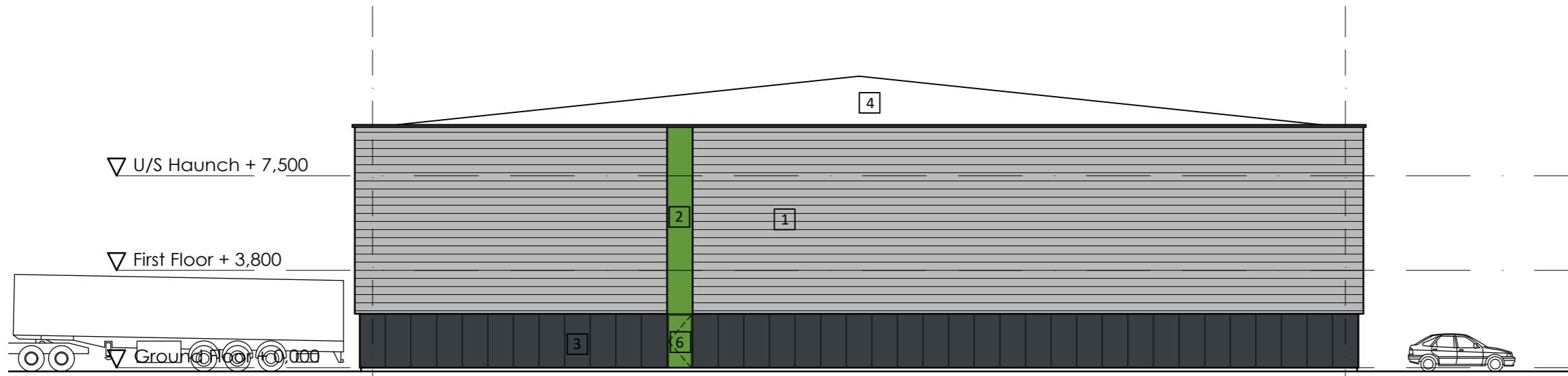
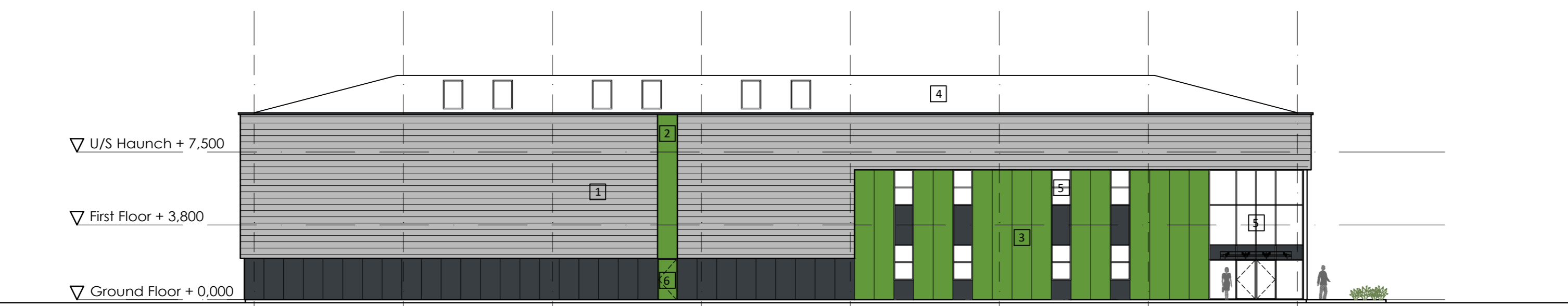


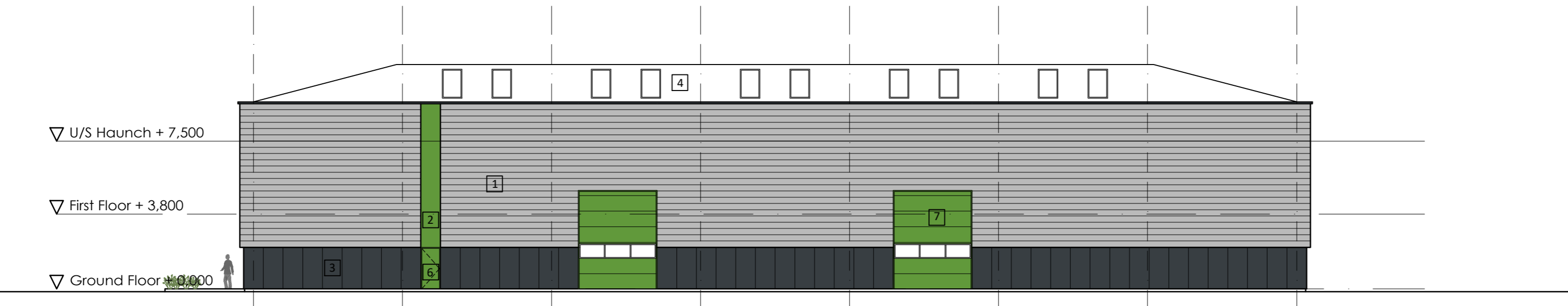
South Elevation



North Elevation



West Elevation



East Elevation

**General Notes**

All site dimensions shall be verified by the Contractor on site prior to commencing any works.

Do not scale from this drawing.

Only work to written dimensions.

This drawing is the property of Fletcher-Rae (UK) Limited (t/a Fletcher-Rae) and copyright is reserved by them. The drawing is not to be copied or disclosed by or to any unauthorised persons without the prior written consent of Fletcher-Rae (UK) Limited.

**MATERIALS KEY**

- 1 Standard Trapezoidal Wall Profile 'Built up' Cladding, Horizontally Laid  
Colour: Pure Grey RAL 000 55 00
- 2 Composite Flat Metal Cladding, Vertical Laid  
Colour: Green RAL 6018
- 3 Composite Flat Metal Cladding, Vertical Laid  
Colour: Anthracite RAL 7016
- 4 Roof - Build Up / Composite metal profiled insulated panel or similar with 15% rooflight. Colour Goosewing Grey RAL 7038
- 5 PPC Aluminium Curtain Walling  
Colour: Anthracite RAL 7016
- 6 Insulated Steel Personnel Door  
Colour: Green RAL 6018 / Anthracite RAL 7016
- 7 Level Access Loading Door  
Colour: Green RAL 6018

Revision

Scale 1:200@A2  
 Status Planning  
 Drawn by CF  
 Date 10.05.19  
 Client Redsun Projects Ltd

Project Halesfield, Telford

Drawing Description Proposed Elevations Unit 1

Drawing No. 18026\_PL05

Rev.



Hill Quays, 5 Jordan Street, Manchester, M15 4PY

t +44 (0)161 242 1140  
 f +44 (0)161 242 1141  
 w www.fletcher-rae.com  
 e info@fletcher-rae.com